

Plot first 8 WET runs for marine refraction profile SR6_1000 multiscale Conjugate-Gradient WET on one page / Sep 14, 2025 :

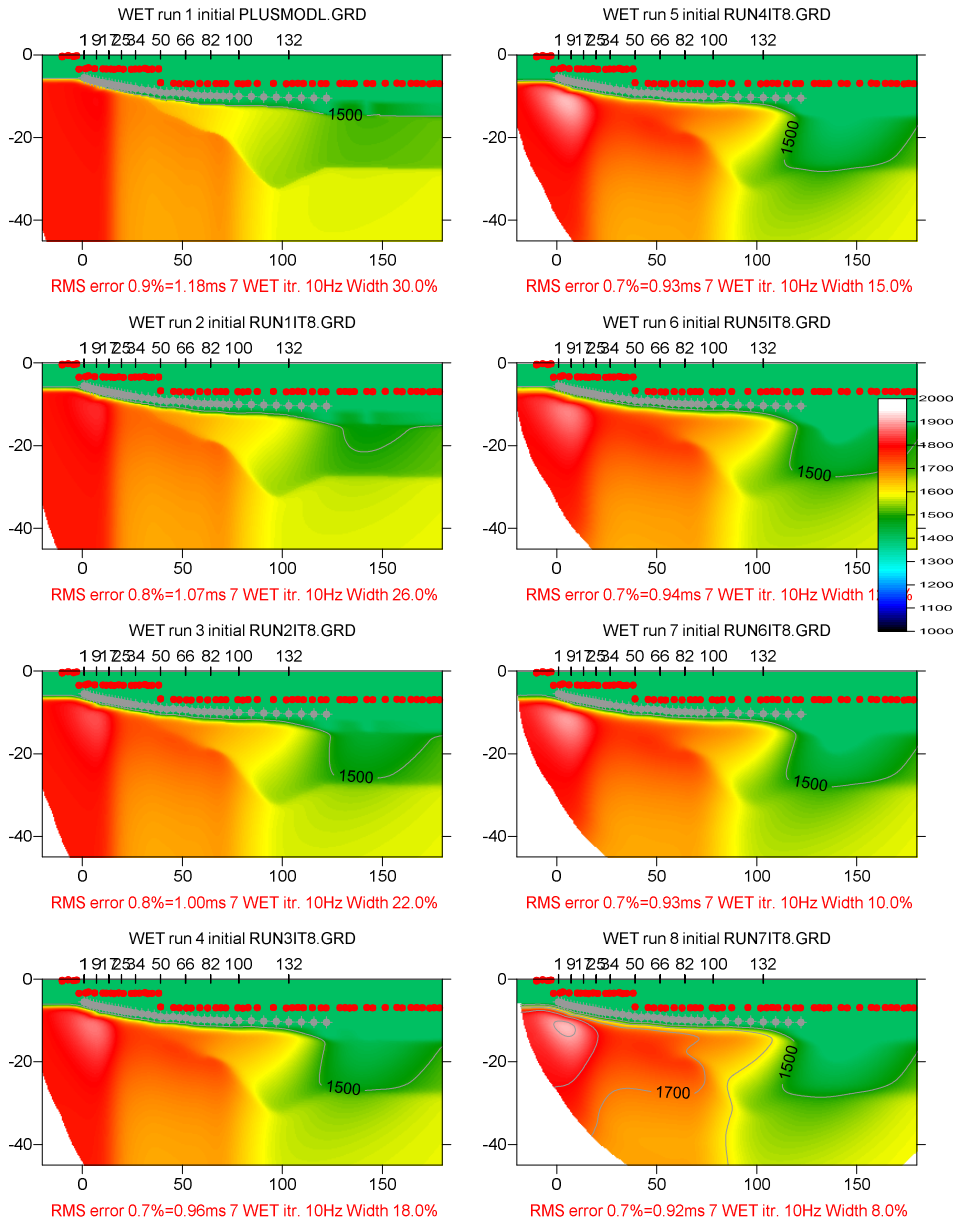


Fig. 1 : plot first 8 Conjugate-Gradient WET runs for marine refraction profile SR6_1000 on one page with new Grid menu command **Plot multiple WET runs on one page** available with our 5.02 Pro version. Starting model for first WET run was obtained our Plus-Minus layered refraction method. See <https://rayfract.com/tutorials/SR6.pdf> Fig. 17 & Fig. 18.

As shown in Fig. 1 and in Fig. 2 our new Grid menu command **Plot multiple WET runs on one page** available with our 5.02 Pro version allows visualizing multiple WET runs in one Surfer plot. This multirun plot enables easy comparison of multiple WET runs (7 WET iterations per run) and allows to visually determine how well the multiscale WET inversion is working with your current WET and WDVS settings.

Observe the decreasing RMS error shown in red in each plot's caption, with increasing run number as shown in each plot's title. See our tutorial <https://rayfract.com/tutorials/SR6.pdf> Fig. 17 & Fig. 18 for the layered refraction Plus-Minus method starting model.

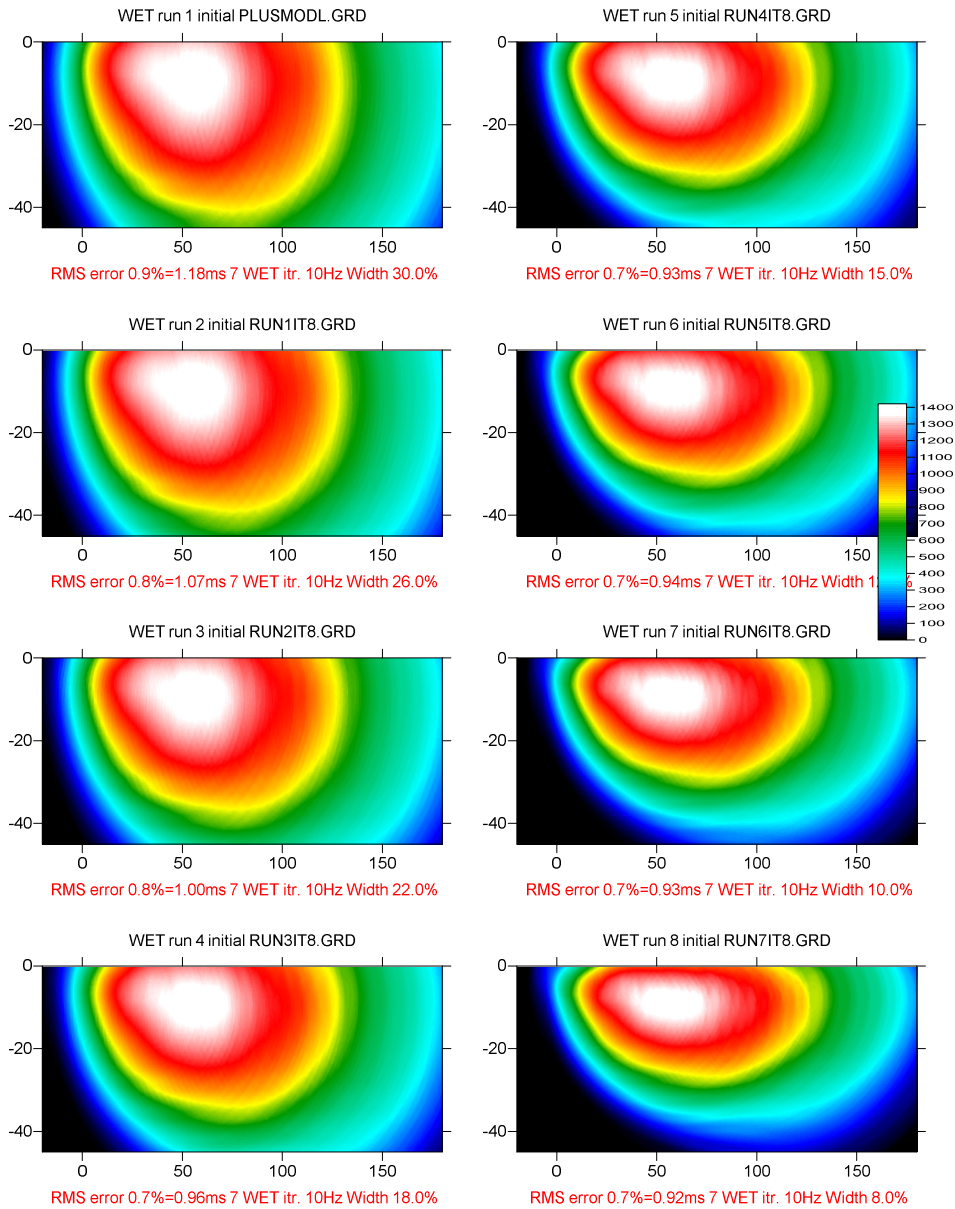


Fig. 2 : WET wavepath coverage plots obtained with Fig. 1. Unit is wavepaths per grid cell.

Here is the LAYRTOMO subdirectory archive for Fig. 1 with PLUSMODL.GRD starting model and WET inversion results :

https://www.dropbox.com/scl/fi/z5bjkimegh2s82mitklyd/SR6_LAYRTOMO_Sep14_25.rar?rlkey=mio1xavqnpou7mrm9ba53ywa&st=7h4nxjkl&dl=0

Here is profile database archive for Fig. 1 :

https://www.dropbox.com/scl/fi/78234fvjgrmo16gk0vx4g/SR6_1000_seis32_Sep14_25.rar?rlkey=tpwpy4gqiume251vl2xy8a81&st=htw0rgil&dl=0